

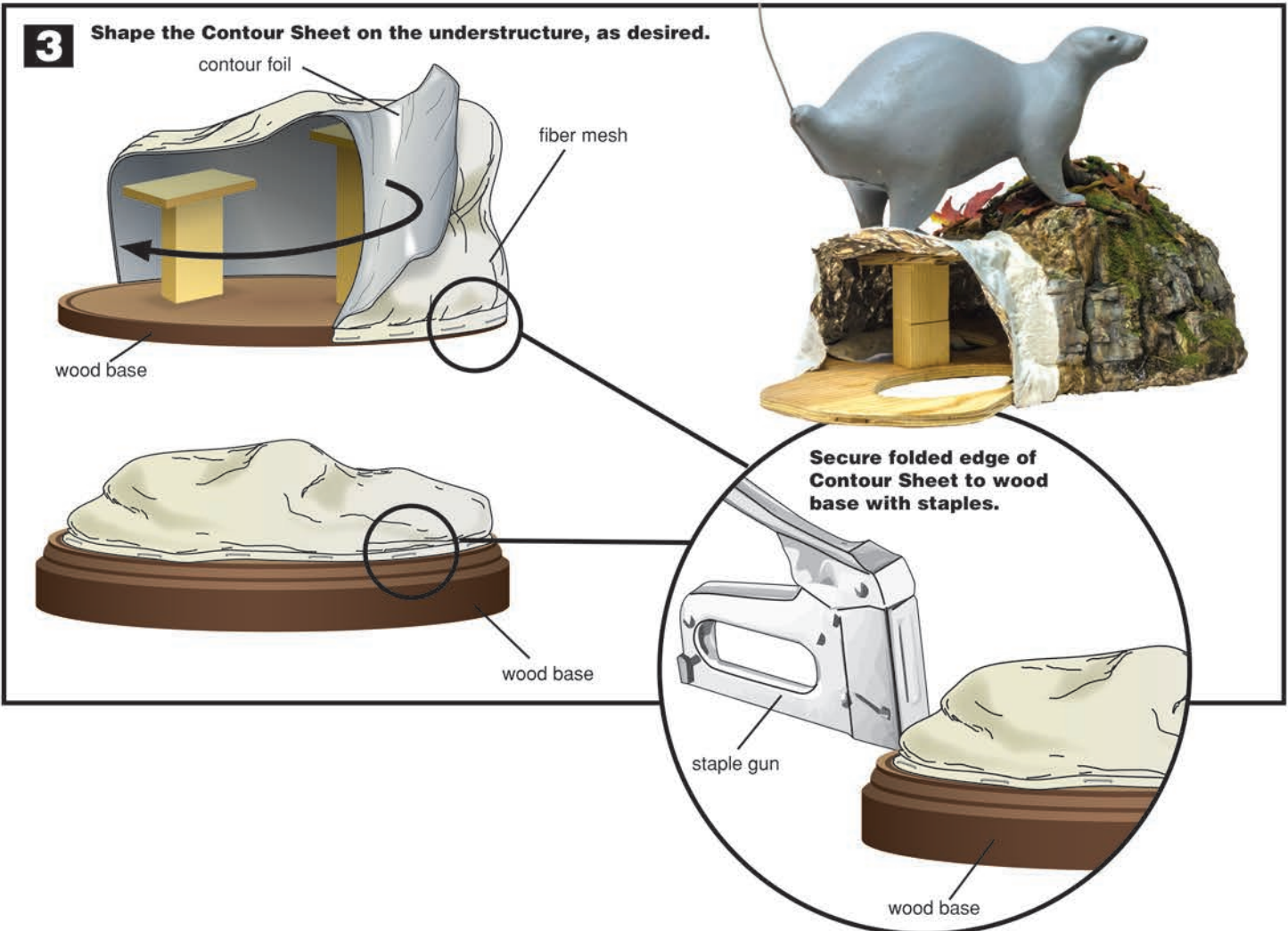
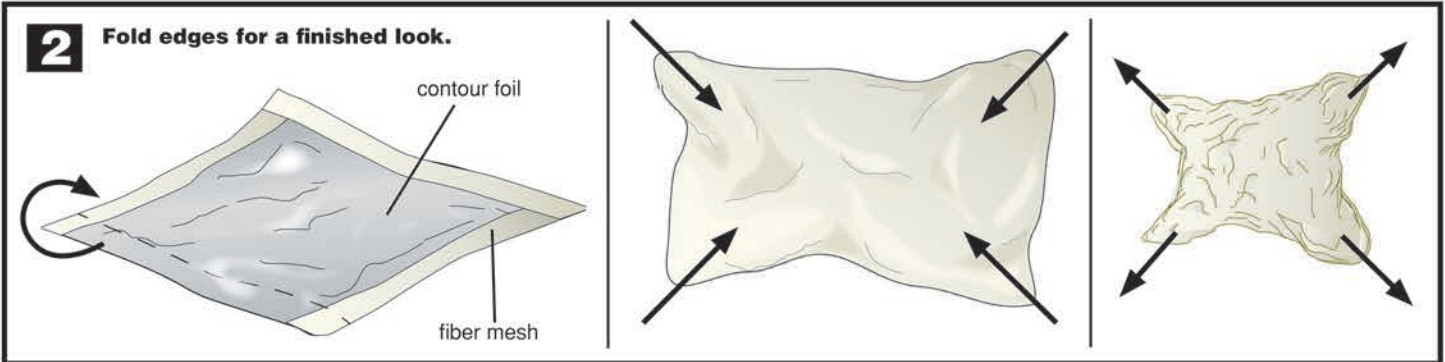
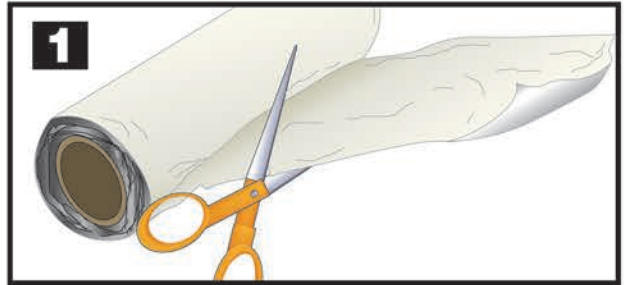
CAUTION: Sheet may have sharp edges. Cutting tool recommended. Use both with care.

SCENES-N-NATURE[®]

CONTOUR SHEET™ NT6158

INSTRUCTIONS

Contour Sheet is a unique material that is easily molded into any shape. When coated with Contour Sheet Plaster (NT6165, NT6168), it forms a hard shell that easily accepts coloring and habitat landscaping materials. Use Contour Sheet to create custom habitat bases that look like realistic rocks, earth or other natural formations. Or, use it to create individual rocks that can be added to any habitat scene.



4

NOTE: If wood base will be visible, cover with masking tape or cling wrap to protect it.

Plaster Mixing Set (NT6172)

Plaster Brush Set (NT6173)

Contour Sheet™ Plaster (NT6165, NT6168)

TIP!
For better adhesion, mist fiber mesh with water before adding plaster.

fiber mesh

water

5

Let dry a minimum of 24 hours, then color.

Spray Bottle Set (NT6190)

Rock Color System Pigments (NT6177-NT6184) / Terrain Base Colors (NT6185-NT6186)

6

Static King® (NF6100)

Static Fiber™ (NF6115-NF6130)

Fiber-Tac™ (NF6102)

Lite Rock Debris (NT6193-NT6195)



TIP! If needed, finished pieces can be drilled into to install landscaping materials.

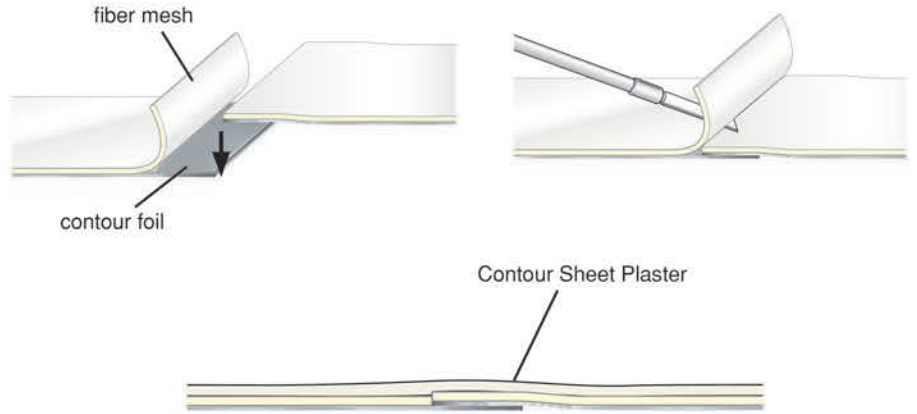


CONNECTING SECTIONS

Option 1 - Peel

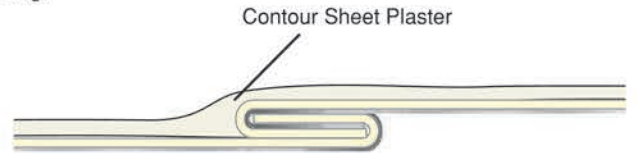


Use this technique when the seam will be in a very visible area. It creates the smoothest seam. It also makes it easier if you are still shaping the Contour Sheet.



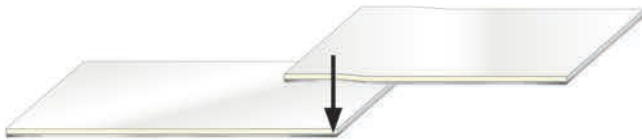
Option 2 - Fold

For extra strength, use this technique in areas where the seam will be weight bearing.



Option 3 - Overlap

Use this technique to join sections quickly and easily. Only use this in areas that will not bear significant weight.



Not suitable for children under 14 years! / Pas adapté aux enfants de moins de 14 ans! / No adecuado para niños menores de 14 años! / Nicht geeignet für Kinder unter 14!

Made in China