

SCENES-N-NATURE

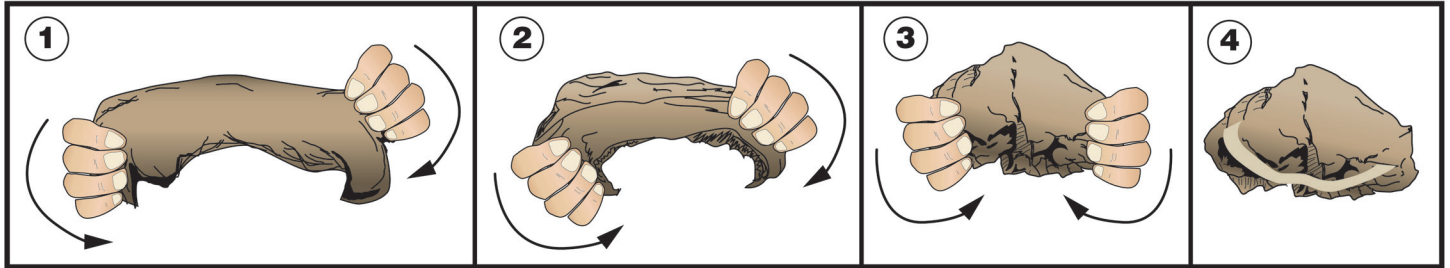
PLASTER CLOTH NT6148

INSTRUCTIONS

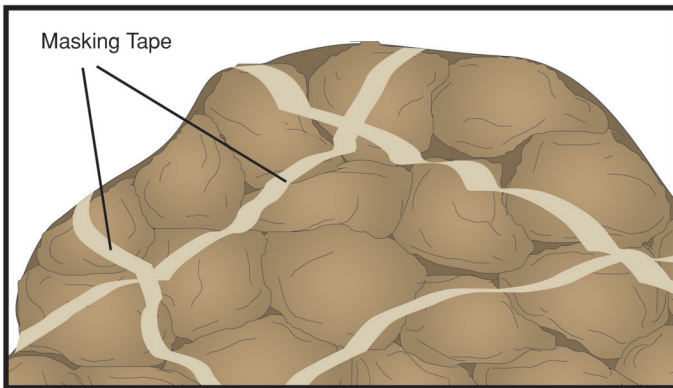
Plaster Cloth creates a durable, lightweight hard shell that easily accepts coloring and other landscaping materials. Plaster Cloth conforms to the understructure, or form, it is applied to. Plaster Cloth can be applied to paper wads, foam, Contour Sheet™ (NT6154-NT6159) or wire mesh. Shape the understructure material before applying Plaster Cloth.

TIP! Use paper wads to create individual rocks or stack them to create large rocks. Form and stack paper wads as shown below.

Forming Paper Wads

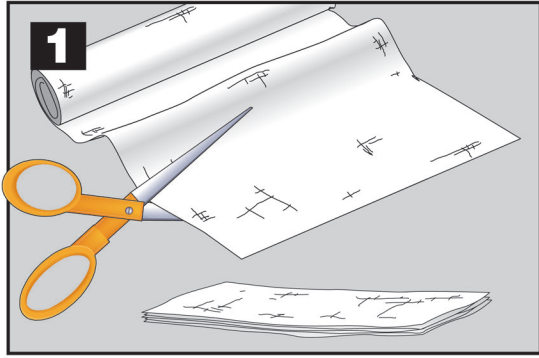


Stacked Paper Wads



Rocks are made from Plaster Cloth and paper wads.

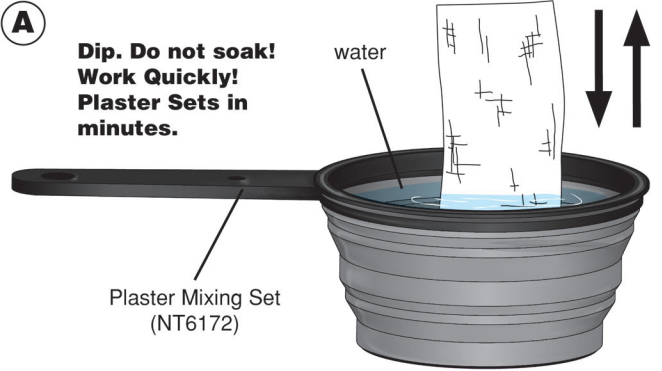
PLASTER CLOTH APPLICATION



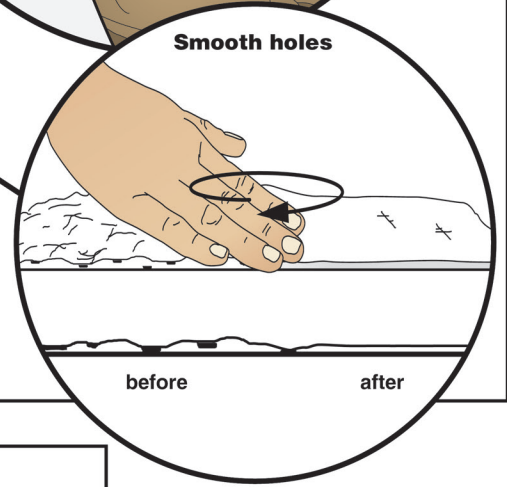
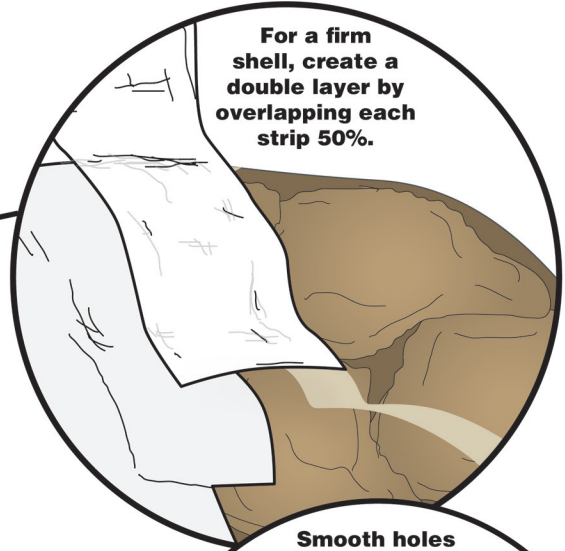
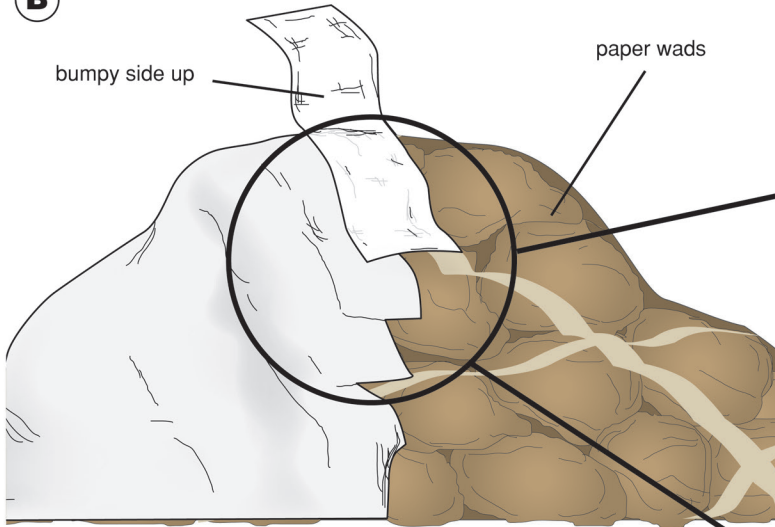
2

A

Dip. Do not soak! Work Quickly! Plaster Sets in minutes.



B



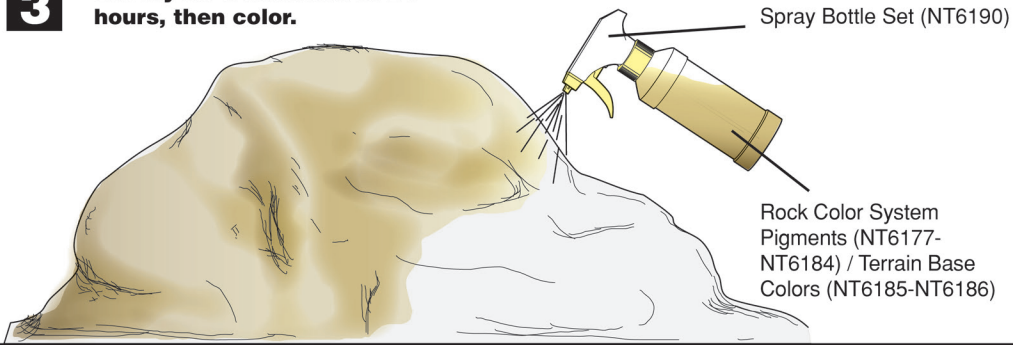
TIP!

Lay strips over under structure. Spray with water and smooth in place.



3

Let dry for a minimum of 24 hours, then color.



Made in China

Conforms to Health Requirements of ASTM D4236

CAUTION: We do not recommend using Plaster Cloth for body casts, as it may irritate skin. Cutting tool recommended. Use with care.

CARE INFORMATION: Clean up spills immediately with warm, soapy water. Should product dry on clothing or work surface, rub with a soft, dry brush before cleaning.

Not suitable for children under 14 years! / Pas adapté aux enfants de moins de 14 ans! / No adecuado para niños menores de 14 años! / Nicht geeignet für Kinder unter 14!